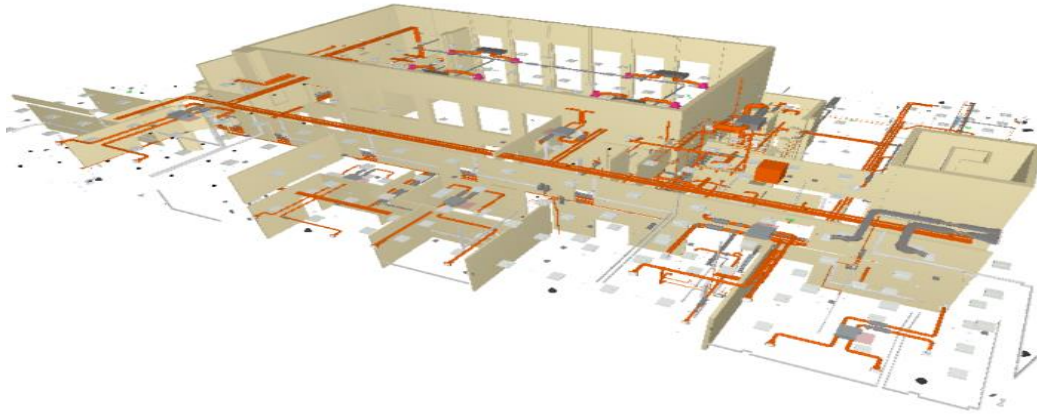


Schedule of Firestopping for M&E Penetrations Using BIM

All penetrations through fire compartment walls should be firestopped to prevent the spread of fire and smoke. Managing these penetrations through fire compartment walls is one example of where BIM can improve your workflow, save time and money, and ultimately make the building safer. Using the correct software package, it is possible to select & extract the fire compartment walls to create a schedule of holes for firestopping. Each penetration can be scheduled out and this information used to track, sign off and certify the penetration and used for maintenance to inspect penetrations on an annual basis to ensure they remain intact.



CHUB-BSL-XX-XX-BC-0401									
Number	Id	Location	Issue Title	Picture	Action Required	Action Taken	Status	Components	
1	CHUB30 2	(B) Level 0, (B) Level 1 Store[F24], Store[G33], IT Hub[G34], Multi Use Area[F09]	(B) Wall 1.16 (Walls 1) and Cable Carrier 1.988 (Cable Tray with Fittings: Cable Basket) are intersecting				Open	Cable Carrier 1.988 (B) Wall 1.16	
2	CHUB30 3	(B) Level 0 IT Hub[G34], Elect[G35]	(B) Wall 1.16 (Walls 1) and Cable Carrier 1.2409 (Cable Tray with Fittings: Cable Basket) are intersecting				Open	Cable Carrier 1.2409 (B) Wall 1.16	
3	CHUB30 4	(B) Level 0, (B) Level 1 Store[F24], Store[G33], IT Hub[G34]	(B) Wall 1.16 (Walls 1) and Cable Carrier 1.2413 (Cable Tray with Fittings: Cable Basket) are intersecting				Open	Cable Carrier 1.2413 (B) Wall 1.16	
4	CHUB30 5	(B) Level 0, (B) Level 1 Store[F24], Store[G33], IT Hub[G34]	(B) Wall 1.16 (Walls 1) and Cable Carrier 1.2416 (Cable Tray with Fittings: Cable Basket) are intersecting				Open	Cable Carrier 1.2416 (B) Wall 1.16	
5	CHUB30 6	(B) Level 0 IT Hub[G34], Elect[G35]	(B) Wall 1.16 (Walls 1) and Cable Carrier 1.800 (Cable Tray with Fittings: Cable Basket) are intersecting				Open	Cable Carrier 1.800 (B) Wall 1.16	

The steps required to produce a firestopping schedule:

- 1 Extract the fire compartment walls and floors from the building design
- 2 Analyse the building services and fire compartment walls for penetrations
- 3 Produce a schedule and specification for each penetration, including as much detail as possible
- 4 Extract the schedule as an excel report

BENEFITS

- 1 Reduces risk by ensuring that the allowance for firestopping is correct and not guesswork.
- 2 Assists with tendering the firestopping package.
- 3 Assists with procurement of materials.
- 4 The schedule can be used to track and audit the penetrations and for certified compliance sign off.
- 5 Can be supplemented with the installation date and installers initials to prove a clear auditable system.
- 6 Can be included in the H & S File for ongoing compliance as a passive fire protection register.

Jason Riddell
Green Contract Services
01270 760379