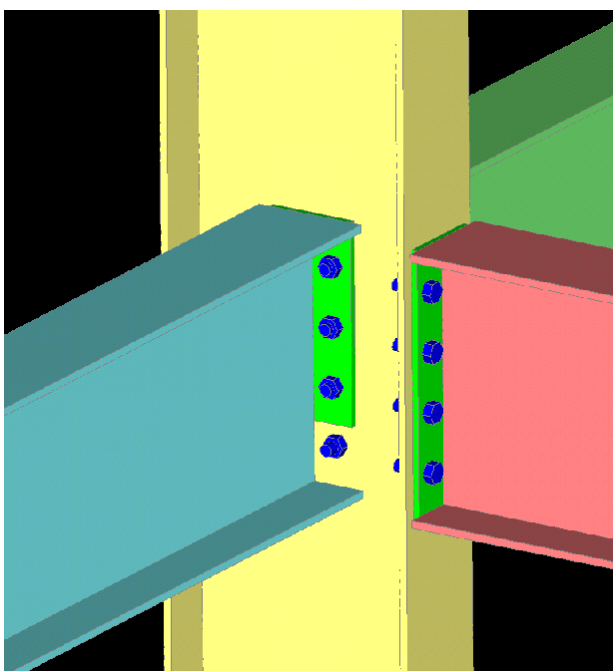


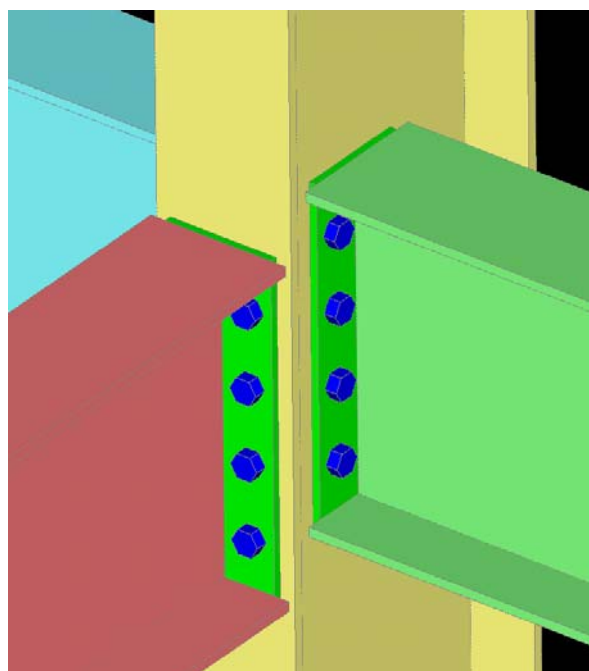


Erector Friendly Safe Joints

Conventional 3 ply connections are difficult to erect as both beams need to be supported whilst the connection is bolted up. This is usually achieved using podgers to support one beam whilst the second beam is feed into position. This is often difficult and forms one of the major risks during erection. A simple solution is to stop the near side end plate short, enabling the far side beam to be fixed on the bottom 2 bolts, thus allowing clear fixing for the near side beam.



Near Side View



Far Side View

Key Points:-

1. Having the bottom 2 bolts for temporary support still allows the near side beam to be lowered into position.
2. Quicker fixing means less time on site .
3. No need to remove bolts when starting erection of a new work day.
4. A lot of standard beam shear connections usually have spare bearing capacity so the number of bolts will not be much more than normal.
5. Smaller end plate on one side means less material and painting.
6. Similar joints can be provided on notched floor beams.
7. Easier and Safer erection reduces the risk of accidents on site.

For further information contact Chris Achilles at Peers Tel – 01204 528393.